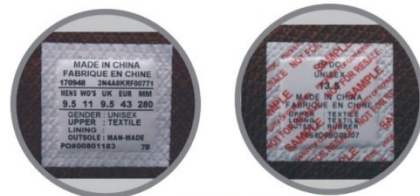
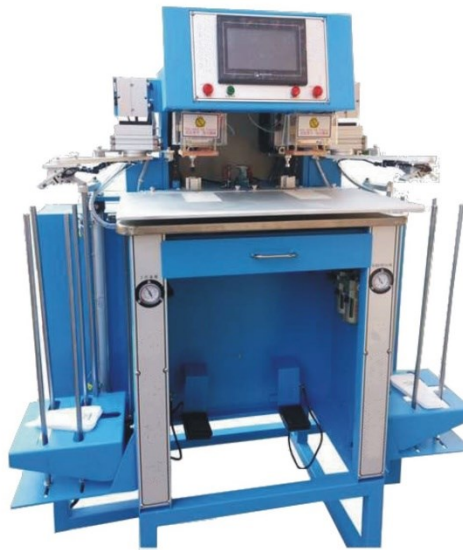


YJ-8268B 鞋標自動燙壓機

SHOE LABEL AUTOMATIC HOT PRESSING MACHINE



圖為：燙壓好的標籤

用途 Use：

該機適用於鞋業、箱包、手袋、手套等已知熱熔壓印標籤，熱壓多工序一體化作業，通過該機作業能提高產量效率，同時也能提高品牌的水平。

The machine is suitable for shoes, bags, handbags, gloves and other known hot-melt embossed labels, hot pressing multi-process integration work, through the machine can improve output efficiency, but also improve the brand level.

特性：熱熔壓印方式。

Features：Thermal soluble Imprint Mode.

1. 該機採用精密的氣動機構自動吸取放置標籤、快捷準確定位、節省時間、燙印效果標準美觀；單機單人操作雙工位的結構設計、左右工位分別帶收料裝置、減輕操作人員的工作強度與提升了效率，相比單工位燙標機提升 80%~100% 的效率。

The machine uses precise pneumatic mechanism to automatically absorb and place the label, fast and accurate positioning, save time, the effect of hot stamping is standard and beautiful, the structure design of single-machine single-operation double station, left and right station respectively with the receiving device, reduce the operating strength of the operator and improve the efficiency, compared to the single station hot marking machine to enhance the efficiency of 80% ~ 100%.

2. 機器可根據材料的熱熔時間與溫度靈活調節，均為 3-4 秒能完成一個標籤。(適用於快速生產線上)

The machine can be adjusted flexibly according to the heat solubility time and temperature of the material, all of which are 3-4 seconds to complete a volume label. (suitable for rapid production online)

規格 Specification：

1. 電壓 Voltage：AC220V/50HZ
2. 氣壓 Pressure：4kg/cm²
3. 功率 Power：600 kw
4. 淨重 Net Weight：135 kg
5. 外形尺寸 Dimensions：680*1130*1230 mm